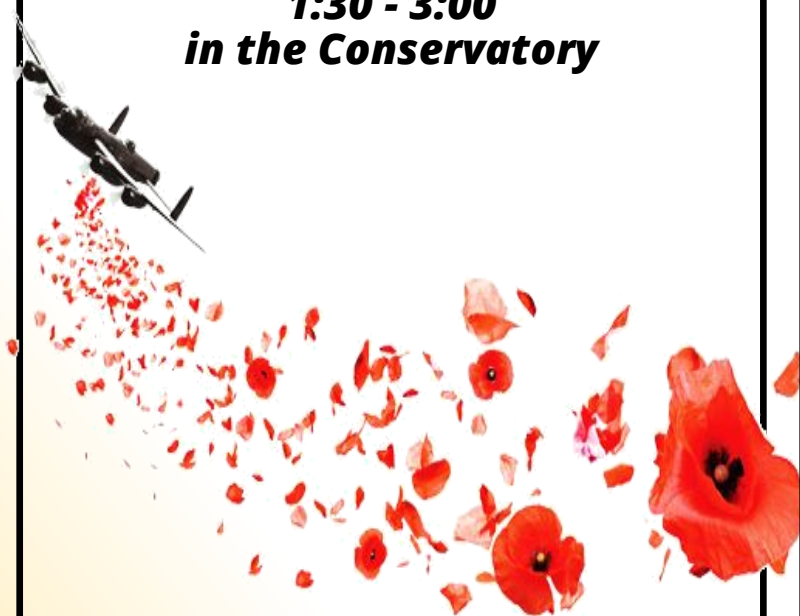


Remembrance Day Tribute

Friday, November 10

***1:30 - 3:00
in the Conservatory***



Music provided by
The Brock House Big Band

Light refreshments in the
Halpern Room after the program

Members & Guests: \$8.00

Tickets available in the office or online at
www.brockhousesociety.com

Brock House Society members who are
veterans may attend at no charge.

Please contact the office
so we have an accurate count.

Art Group Cards

The card rack in the office has been restocked
and several new images have been added.
Here are a few examples:



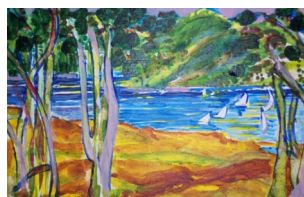
The Way Through the Woods
by Tessa Wilson



Late Summer
by Robin O'Brien



Secret Cove Boats
by Beverley Grice



Jericho
by Lorraine Douglass

Same great price: \$3.00 each, 4 cards for \$10.00.
All cards are blank inside.

Come soon for the best selection. Stay tuned for
new Christmas images.

Thank you to the artists for sharing their
beautiful work,

*-Gillian Olson,
Art Group Convener*



Where Seniors Stay *Young*





From the President's Pen

The House is back to bustling and it may be the Greeters who are the happiest. I'm kidding of course but I seem to remember that it was the lovely people in the Foyer who commented on the relative emptiness the most during the summer months. Be sure to say "hi" to your Greeter as you show your card the next time you come in. What's **the most**, without question, exciting thing that happens annually at this time? The unveiling of the new membership card colour.

As Gilda Radner liked to say, "It's always something". Despite everyone's best efforts the work in the Halpern Room hit a snag or two and we apologize for the inconvenience. Good things come to those who wait, right? A couple of weeks ago I received the following which describes what we've all been waiting for.

Item	Previous Price (established 2015)	New Approved Price
Hot Entree	\$9.00	\$11.00
Cold Entree	\$8.00	\$9.00
Soup -small	\$3.00	\$3.50
-large	\$4.50	\$5.00
Coffee -cup	\$1.75	\$1.75
-mug	\$2.25	\$2.25
Tea	\$1.50	\$1.75
Juice	\$2.25	\$2.25
Beer/wine -local	\$6.00	\$6.75
-imported	\$6.75	\$7.25
Sandwiches		
Egg	\$4.25	\$5.00
Ham and Cheese	\$4.25	\$6.00
Tuna	\$4.25	\$5.00
Shrimp and Egg	\$6.00	\$7.00
Avocado and Cream Cheese	\$6.00	\$7.00
Mixed Trio	\$6.00	\$7.00
Turkey and Edam	\$6.00	\$7.00
Vegetarian	\$6.00	\$7.00
Smoked Salmon	\$6.00	\$7.00
BBQ Salmon	\$6.00	\$7.00
Chicken Salad	\$6.00	\$7.00
Any sandwich on Pumpernickel	\$6.00	\$7.00
All plain dessert items	\$2.00	\$2.50
All fancy dessert items	\$3.00	\$3.50
-Thanks to Tom Henry, Director, Planning and business Development		

The Halpern Room will soon have a new audio visual system. This will mean bright video and still images on a very large high definition TV screen mounted above the fireplace and a sound system which will include mono, stereo, and surround sound audio. Speech and music will sound crystal clear with a wide dynamic range and will be evenly distributed through all areas of the room. Lectures and presentations can be made from wirelessly connected laptops and wireless microphones so a presenter can stand anywhere without the need to make hard connections to the equipment. The screen will be bright enough to not require the blinds drawn. When movies are shown the surround sound will considerably enhance the experience whether sourced from a laptop, regular DVD, or blue ray disc.

-Adrian Gatrill, Director,
Property Management

Sounds exciting. Let us know what you think.

Speaking of waiting, Kaz Samejima our talented and popular caterer, requested increases in prices a couple of months ago and the Board of Directors has now approved them. Kaz and the Board agree that the increases reflect an accurate picture of the rise in costs we've all seen at the grocery stores over the past two years. The new prices will be in effect starting October 16.



As many of you know, I've been a proud member of the Porcelain Painting Group since my first week at Brock House. One of our members, Karen Catherwood, died suddenly on September 5. She was an accomplished microbiologist and enormously talented artist. Karen was also a gourmet cook

and during the celebration of life we all watched her sister, Sue, as she cleaned out the stuffed larders and gifted fabulous sauces, vinegars, spices, coffees, baking supplies, etc.

A reminder from the editor of your newsletter 😊
If you'd like to share a little something about a Brock House friend who has died recently, please do and send it by email to:

BrockHouseGallimaufry@gmail.com

Memories can be wonderful.

See you around the House!

-BevAnn Lister Dean, President
2

BROCK HOUSE *Society*



Friday Flicks

Start time: 1:00 p.m.

\$2.00

Exact change please.

October 6

My Internship in Canada

108 mins. - 2015 - Canada - Some subtitles

A satirical comedy about an independent MP from Northern Quebec who finds himself holding the tiebreaking vote on whether Canada should go to war in the Middle East.

October 13

The Girl on the Train

112 mins. - 2016 - USA

A voyeuristic mystery thriller based on the 2015 Paula Hawkins novel.

October 20

Jiro Dreams of Sushi

81 mins. - 2011 - USA - Subtitles

A documentary about work, family, and the art of perfection, depicting sushi master Jiro Ono's life as both an incomparable success in the culinary world and as a loving yet complicated father.

October 27

A United Kingdom

111 mins. - 2016 - Britain

A true story about the heir to the throne of Bechuanaland (later Botswana), Seretse Khama. While studying law in London during the 40's he meets a white woman, Ruth Williams. Their eventual marriage causes international turmoil.

Services for Seniors

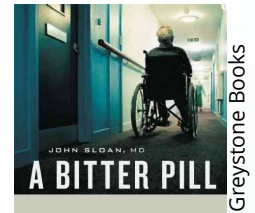
*Here's what's on this month in the Halpern Room
Wednesdays, 1:00 p.m.*

October 4

Medical Mental Capability Evaluations - Dr. John Sloan

When is a person not capable of making important decisions around marriage, finances, healthcare and making a will? In his talk, Dr. Sloan outlines the steps to make this evaluation to help keep vulnerable people and their assets safe.

Dr. Sloan's book, *A Bitter Pill: How the Medical System is Failing the Elderly*, is available in the Brock House library



October 11

Falls and Falls Prevention - Justin Chipperfield, physiotherapist

A fall can change your life in the blink of an eye. Prevention is paramount. Justin Chipperfield gives us the lowdown on being proactive.



October 18*

The Hidden Risks of Retirement Investing - Peter Brock, Business Development Manager

Improve your income and become a better investor. Recognize and avoid common pitfalls. A veteran investment advisor with a focus on retirement income, Pete Brock will show you simple ways to improve your results so you feel more confident and secure.

October 25

Money Management - Tracy Lundell

Tracy Lundell, referred by Peter Silin, provides a full suite of health management services. Will discuss Reverse Mortgages, LOC, Tax Implications, Investment and Wealth Management.

***Dr. Liz Drance had to cancel her presentation. Special thanks to Peter Brock for stepping into the breach.**

The quickest way to double your money is to
fold it over, and put it back in your pocket.

- Will Rogers



Workshop News

Like most of the other groups in Brock House the woodworkers need more space. One strategy is to take more space. A second strategy is to make better use of the available spaces. As part of the second strategy we have been reworking storage areas in the workshop. We have also been rationalizing the tools and supplies kept in the shop.

As part of that rationalization we intend to eliminate the urinal in the shop because the bathrooms in Brock House are readily available and more convenient for members from both sexes using the workshop. We have also decided to discard the vintage collection of woodworking magazines that have accumulated over the years.

I am hesitant to dump the magazines into a recycle bag because they contain so many interesting ideas for novel wood furnishings and crafts as well as many beautiful pictures of finished wood projects and woodworking machines. If you wish to own any of these collector items or browse through them for woodcraft ideas to pursue before they are recycled, please visit the workshop on Monday or Thursday morning over the next few weeks to look through the magazines set out on the workbench.

If you discover a custom woodworking project that you wish to commission please contact me, the Workshop Coordinator, at the Brock House workshop on Thursday morning or e-mail me wramey@mail.ubc.ca with "Brock House Projects" in the subject line.

-Bill Ramey



Sharon Copeman

The Brock House Choir began it's fall practices on September 12. The Brock House Choir AGM was held on September 19. Heather Friesen has retired as president and Sharon Copeman was elected by acclamation as our new president.

We welcome two other new board members, Beverllie MacInnes and Rob Picard. Thanks also go to all board members those who remain on the board sometimes for many years and also to those just beginning. Their dedication and hard work keeping the choir running smoothly is appreciated.

-Judy Ashton

Brock House Orchestra

The orchestra did not meet during the summer, following the fair, but we are back in full swing now, having welcomed two new cellists last spring: Sandra McLeod and Bill Fairbanks. We now have five wonderful cellists!

This fall, we look forward to playouts October 16 at Amica at Arbutus, October 30 at Shannon Oaks and November 15 at Crofton Manor. We're enjoying our rehearsals under the able baton of Jeffrey Tseng. But we are also very glad to see our former conductor, Ernie Fiedler, still coming to Brock House.

We meet Wednesday mornings in the Begg Room on the second floor from 10 until noon, with a coffee break. If you play an orchestral instrument, you are welcome to join us, or just drop by for a listen.

-Ann Foster

The conductor is a peculiar person.
He turns his back on his friends in the audience,
shakes a stick at his players in the orchestra,
and then wonders why nobody loves him.

Victor Borge

Brock House Sing-Along

As always we are happy to welcome newcomers. Join us any **Monday afternoon from 1:30 to 3:00 p.m. in the Conservatory**. Leora Williams plays the piano and Joane Sunahara accompanies with her recorder. All members are welcome. Come and sing, put a smile on your face and meet some friendly people. Relax and enjoy the songs of our era as well as seasonal favorites. We make our sing-alongs a fun activity that generates smiles and brightens our day.

In addition to our Mondays at Brock House, we visit seniors' residences each month for a participatory sing-along with their residents. These outings are very rewarding experiences for both our members and the home residents.

Sing, sing a song
Make it simple to last
Your whole life long
Don't worry that it's not
Good enough for anyone
Else to hear
Just sing, sing a song.

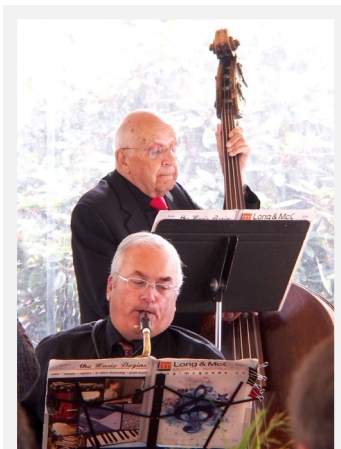
-Joe Raposo, 1972

-Alex Curror

We had a fantastic time. Our members and their guests had trouble staying in their seats. We may be ready for a dance contest.

Thank you to the Brock House Big Band, the Events Committee (all amazing volunteers) and our wonderful staff.

-Ed.



Photos credit: Margaret Hyslop

How the Jewelry Committee Works



The jewelry committee starts every season by sorting through the jewels that didn't sell at the previous fair. As a group we decide which items should be reduced in price to precipitate a sale and lower the old inventory.

We re-price and re-tag many pieces before we move on to looking at the new donations. We look at every piece very carefully, and when pricing we bear in mind what is fashionable at the moment, what is unusual. If a piece looks special we set it aside for our appraiser Rana to give us an idea of what price is fair for the item in this current market.

If an item needs cleaning one of our members, Hazel, kindly takes responsibility for cleaning and polishing. If small repairs are needed we have tools and fix items where possible.

The next step is determining the price and tagging each item for sale. We make decisions on pricing higher value items as a group. We can receive several hundred pieces (this is the fun part), we spend our time examining pieces and chatting about what era the piece may come from. After tagging all items are sorted into categories and stored. If you don't see us please take your donations to the office and they will be securely stored for us. We thank you for all the donations, without your help we wouldn't be successful.

-Patricia Peters, Convenor



Yarn and Needle Crafts

The Yarn and Needle Crafts group is always in need of donations of whole balls of good new yarn to make projects to sell at the Summer and Christmas Fairs. Batches of several balls of the same yarn are especially useful in order to make larger projects. Donations of clean new fabric, thread and notions would also be appreciated. We are also very pleased to receive donations of new handmade items from Brock House members who sew, knit, crochet, embroider, weave, quilt, etc., to sell at the Fairs. Please bring donations to the Meyer Room on Mondays between 9:30 and 11:30, or leave at the Office.

-Dorothy Simons and Carol Jackson, Convenors

Pacific Opera Company's production of **Leoš Janáček's** *Jenůfa*

Based on the play *Její pastorkyňa*
by Gabriela Preissová



Sunday, October 22
\$115.00 members
& non-members

Leave Brock House 9:30 a.m.
Return 9:45 p.m. (est.)

Internationally known director Atom Egoyan returns to Victoria to direct Leoš Janáček's gripping masterpiece, *Jenůfa*. This monument of 20th century opera centres on the relationship between two formidable women – Jenůfa and her stepmother – and the consequences when Jenůfa has a child out of wedlock. Janáček's distinctive musical voice, mixing folk harmonies with the rhythms of spoken Czech, is radiant and haunting.

Package includes: Bus transportation from Brock House to and from Tsawwassen ferry terminal. Bus transportation to and from Schwarz Bay ferry terminal to the Royal Theatre. One ticket to *Jenůfa* and all ferry fares.

Ruth wrote this for her dear friend Audrey on the occasion of her 90th birthday. Audrey will soon be 91 and we wish her all of the very best. - Ed.

DAYS OF YORE

It all began
on a crisp Virden November
Audrey Alexandra was born
a sister for Irene & Paul
added joy for Mum & Dad
life's journey, began
first schooling in Manitoba,
then a move West to B.C.
and skipping a grade to become
a '44 Grad of Burnaby South,
Normal School in the hub of Victoria
a teaching job, in a one roomed Tappen schoolhouse
learning, love, and laughter with her students,
next Armstrong's red bricked school,
a new chapter began
boarding at "Andrews" & sharing with Ruth
ice skating, cycling, badminton, dance
'twas at such an event
with Dad, Arvid, on sax, & Mum, Florence, on piano.
their son Laurie, ventured to ask
the 'new teacher' to dance
not knowing that these steps would lead
to romance, courtship, love, and a June wedding
then Laurie's move up the CPR line
to Leancoil, with the grinding of pushers & the growling
of grizzlies, 4 years of this gave way
to a move to Golden, and a home, where Pat and then
Carol were born
a continued career in the classroom again
with General Johnson in command
then summers for travelling: Egypt, Sweden, Australia
Sean & Keith, Pat's boys, now young adults
Grandparents, 61 years settled in this mountainous town
time now, for Audrey's passion for bridge
and a welcome to the Wonderful World of
NONAGENARIONS
90 YEARS OLD as of Nov. 13, 2016.
CONGRATULATIONS!

*Ruth (Allison) Enns
Your Forever Friend*

Art Group Follow up to Summer Fair **- 2 more paintings -**

First a **Robert Bateman** limited edition print (framed). Estimated value is **\$850.00**, we are asking **\$400.00**.



Buffalo at Anboseli Park

Second a **John Hansen** original oil painting, 8" X 16" (framed).



Spit Bridge

If you are interested in purchasing either of these paintings please contact Sophie at sophied@brockhousesociety.com

Thank you,

*-Gillian Olson,
Art Group Convener.*

Brock House Chess Club

Thanks to Stephen Wright and all who came to study Stephen's intriguing lessons on the "end game". We played around with kings and pawns to find winning and to avoid losing strategies.

Next month we hope to invite the Bonsor chess club for a friendly match.

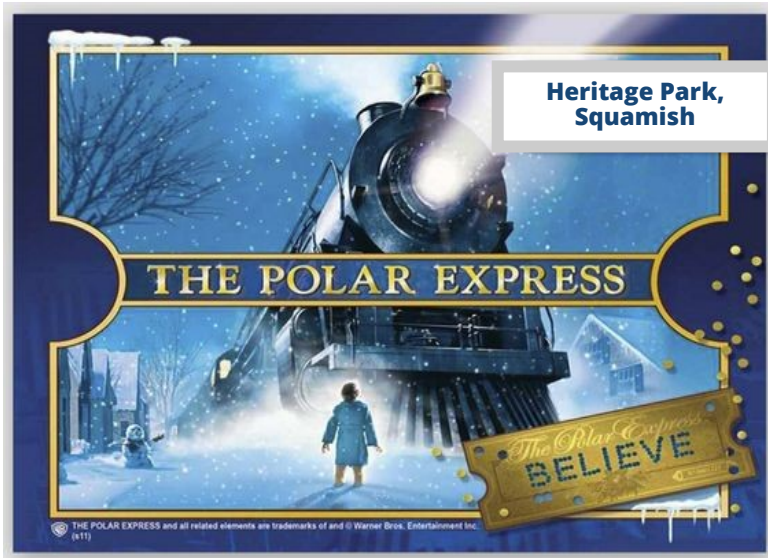
Meanwhile the Brock House chess players meet every **Tuesday and Thursday from 1:00 to 3:00 p.m. in the Meyer room**. All are welcome to come and play or watch and share their experiences.

The following are the October Puzzles. Let us know if you solved & liked.

-Alex Ramirez, Convenor

Black move and wins in 3





**Saturday, December 9
10:00 a.m. - 5:00 p.m.**

**\$121.00 per person
Members & Guests
First Class tickets!**

Kick off the Holiday Season with family and grandchildren by hopping aboard the **9th Annual Polar Express!** The one-hour train ride is filled with magic, music, stories and on-board refreshments Polar Express style. You're traveling first class, so you get priority boarding and a special collector's mug!

Package Includes: Polar Express first class ticket, admission to the North Pole Workshop and Gingerbread Village, mini-train ride, lunch at the *Watershed Grill* in Brackendale, and all fees and taxes.

Brock House Christmas Luncheon

Wednesday, December 6

4 sittings:

11:00, 11:30

12:00, 12:30

Join us for a special Christmas feast prepared by the Brock House Restaurant! Enjoy this full turkey dinner buffet

complete with a glass of wine!

Guests are welcome.

You will not be rushed through your meal, no matter which sitting you choose

**Ticket \$35.00 - members
\$40.00 - guests**

*on sale now in the office
or purchase on-line*

**Absolutely no ticket sales
or refunds after November 22**

Classic Carollers



Thursday, December 14

The Classic Carollers are coming back to Brock House! They will sing a mix of early and modern music - all to do with the Christmas season. The varied repertoire will be sung *a cappella*

Performers:

**Tim Pawsey * Heather Pawsey
Shelley Hunt * Stephen Courtenay**

1:45 - 3:15

In the Conservatory

Members: \$8 Guests: \$10

**Tickets available in the
Brock House Office or on-line**

**Sponsored by the
George Halpern Fund**

Events at a glance

Monday, October 2	Secret Cove Tour
Sunday, October 22	Pacific Opera Tour: Jenufa
Sunday, November 5	Cirque Du Soleil: Kurios
Friday, November 10	Remembrance Day Ceremony
Friday, November 17	Chicago Bridge Lunch
Saturday, November 25	Annual Christmas Fair
Tuesday, November 28	Reading Jam
Wednesday, December 6	Christmas Luncheon
Saturday, December 9	Polar Express Tour
Thursday, December 14	The Classic Carollers Return!

Please welcome these new members to Brock House Society

Peter Brock	David MacIntosh
Ruth Brough	Jean McAllister
Lorraine Calame	Shel Nathanson
Lee Caldwell	Sharon Norlander
Heather Clarke	Corazon Orata
Amy Clements	Wendy Rigby
Wendy Donaldson	Charlie Simmons
Iona Douglas	Sandra Stefanopoulos
Carolyn Dunn	Tammie Tompkins
Nora Grove	Mary Trokenberg
Patty Hahn	Edward Truman
Anne Hutchings	Peter Vatcher
Janet Lee	Ethel Zoldi

Get ready for the November Reading Jam

Tuesday, November 28

**Calling all closet poets and
short-story writers!**

Please email me, Brenda McDonald, at bguymcd@shaw.ca if you would like to come and read your own poem or short story.

If you do not have email, give me a call at **778 371 7177** to book your spot!

Reservations will be made in order of receipt of email or phone call.

-Brenda McDonald, Convenor
bguymcd@shaw.ca

Are you a writer looking for an audience for your work? If so, *The Gallimaufry* would love to hear from you. Brock House Society members' pieces are featured regularly.

Send your short story, essay or poem to BrockHouseGallimaufry@gmail.com Please submit it in Microsoft Word or similar. If submitting a photo, a 'jpeg' is preferred.

The deadline for the November issue of *The Gallimaufry* is October 22.

-BevAnn Lister Dean, Editor



LUNCH MENU

Brock House Society

OCTOBER 2017

Tour to Pacific Opera Victoria for
"Jenufa"
Sunday, October 22

MONDAY	TUESDAY	WEDNESDAY	THURSDAY	FRIDAY
2 Fish Chowder Salmon Croquettes Cabbage Salad	3 Squash Soup Jamaican Chicken Thighs Red Rice Salad	4 Lentil Soup Goat Curry Peas Paneer Salad	5 Thanksgiving Lunch With all the Trimmings PLEASE REGISTER for this lunch	6 Boston Clam Chowder Fish & Chips
9 Thanksgiving Day BROCK HOUSE CLOSED	10 Shrimp Chowder Seafood Crepes Rice Pilaf Salad	11 Won Ton Soup Pineapple Pork Vegetable Stir Fry Rice	12 Borscht Meat Cabbage Rolls Potato Latkes Salad	13 Squash Soup Fish & Chips
16 Napa Cabbage Soup Teriyaki Chicken Thighs Carrots, Rice	17 Leek Soup Fish Pie Creamed Spinach Salad	18 Beet Soup Beef Stroganoff Butter Noodles Salad	19 Italian Bean Soup Shrimp Manicotti Rapini Salad	20 Vegetable Soup Fish & Chips
23 Corn Chowder Squash Casserole Green Beans Salad	24 Minestrone Soup Meat Lasagna Peas Salad	25 Chicken Corn Soup Chicken Chow Mein Vegetable Stir Fry Rice	26 Tomato Soup Macaroni & Cheese Broccoli Salad	27 Potato Leek Soup Fish & Chips
30 Lemon Chicken Rice Soup Greek Chicken Thighs Potatoes, Salad	31 Potato Chowder Shrimp Gumbo Okra Salad			

THE CAFETERIA DOES NOT CARRY LARGE AMOUNTS OF CHANGE. PLEASE DO NOT PRESENT LARGE BILLS IN PAYMENT FOR YOUR MEAL.
Cafeteria is open from 9:00 a.m. to 3:30 p.m. - Lunches are served from 11:30 a.m. - 1:00 p.m.